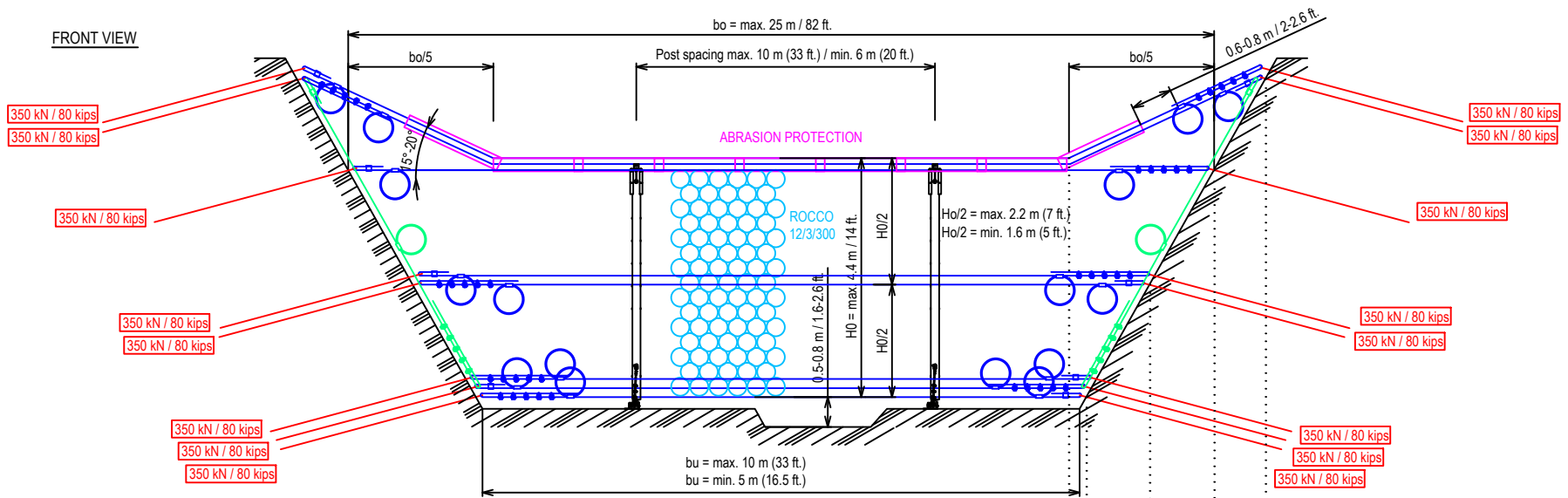
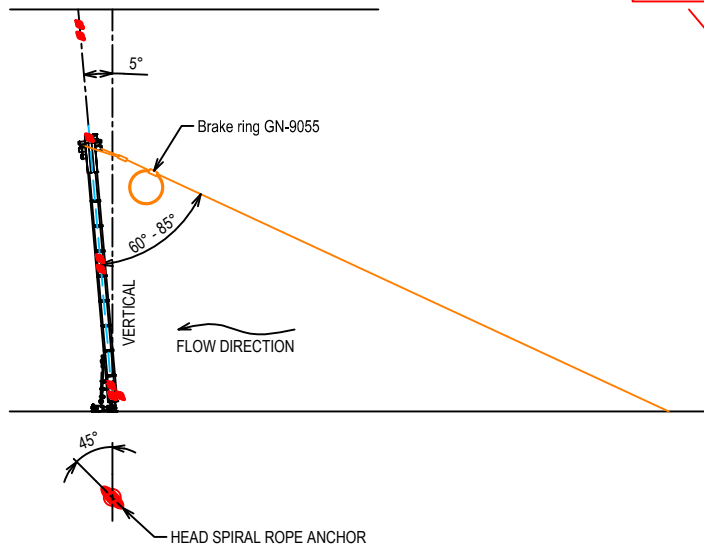


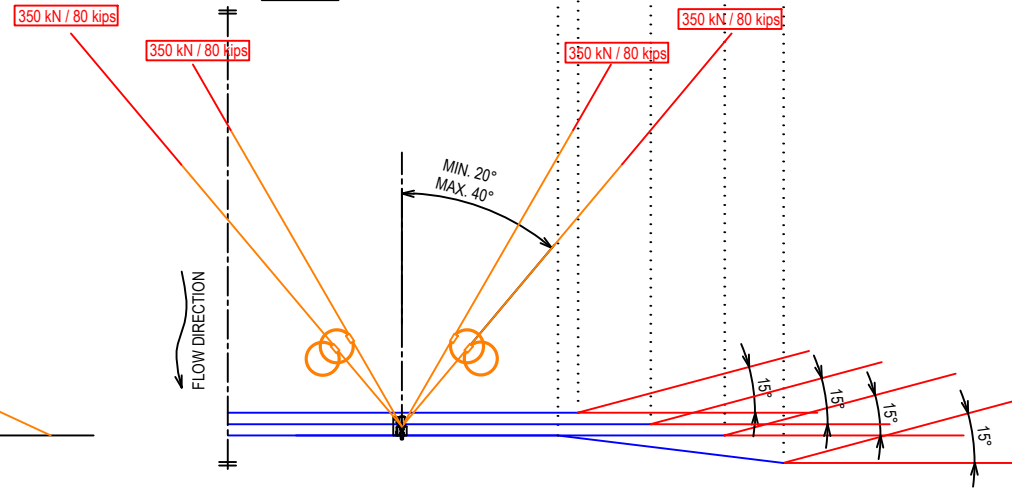
FRONT VIEW



SIDE VIEW



TOP VIEW



COMPONENTS:

- SUPPORT ROPE  $\phi 22\text{mm}$  GEOBINEX WITH BRAKE RINGS GN-9017
- RETAINING ROPE  $\phi 22\text{mm}$  GEOBINEX WITH BRAKE RING GN-9055
- BORDER ROPE  $\phi 22\text{mm}$  GEOBINEX WITH BRAKE RING GN-9017
- ROCCO RING NET 12/3/300
- ABRASION PROTECTION TYPE GA-8055
- SPIRAL ROPE ANCHOR TYPE 22.5 mm



This document is proprietary to GEOBRUGG AG and is copyrighted with all rights reserved. It may not in whole or in part, be distributed, copied in any form, translated or otherwise reproduced in any form.

This document will not be exchanged, when being modified.

Modification:	M:%	Substitute for: GD-1005 Ausg. vom 04.10.16	
		Replaced by:	
<b>Debris Flow Protection System UX</b>		Drawn	12.07.17 BIH
<b>Type: UX100 - H4</b>		Checked	12.07.17 BIH
		Approved	12.07.17 BRR
GEOBRUGG AG CH-8590 Romanshorn		<b>GD-1005.1e</b>	